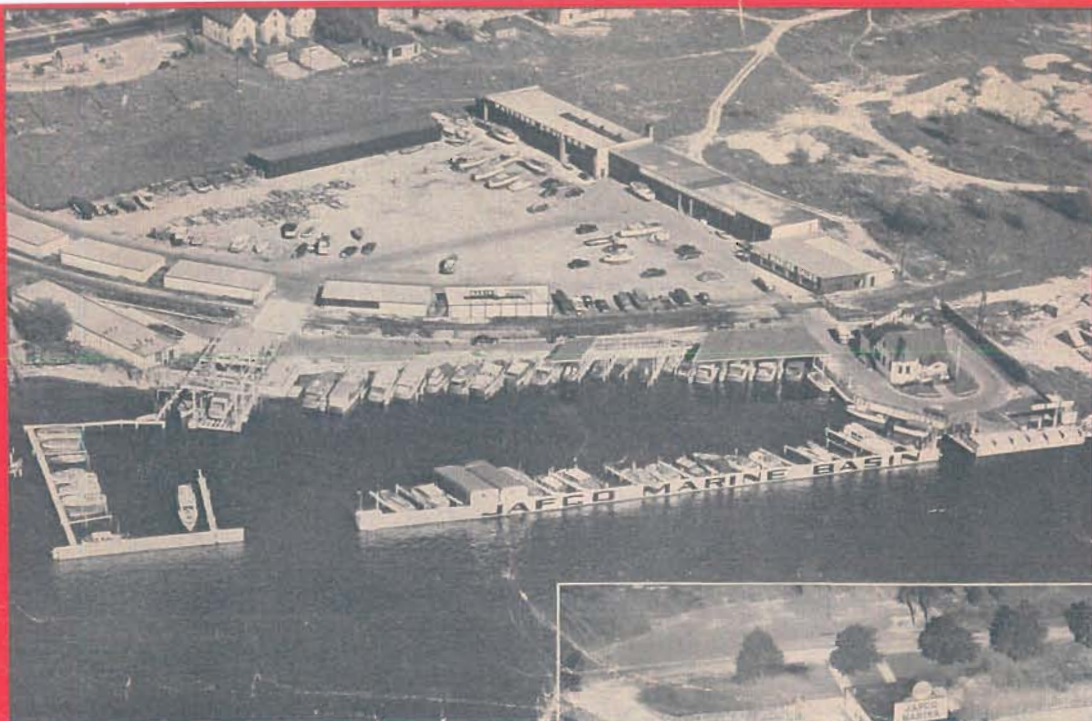


Shepherd



BOATS



JAFCO

JAFCO MARINE BASIN, INC.

2192 Niagara St., Buffalo 7, New York

Telephone Bedford 2775

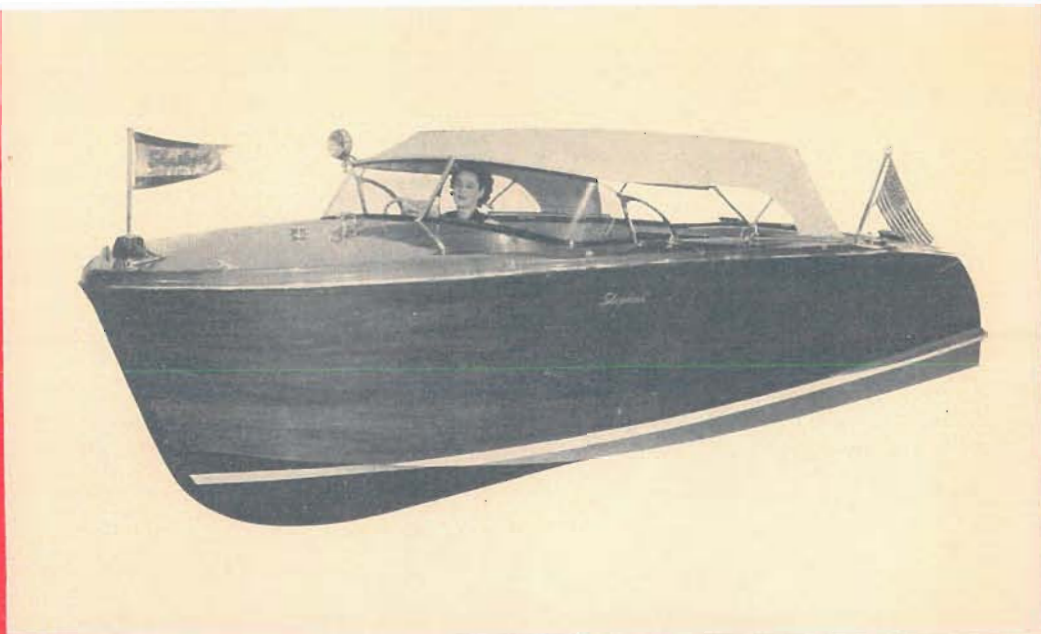
JAFCO MARINA

(A Division of
Jafco Marine Basin, Inc.)
Grand Island, New York



Exclusive United States Distributor of Shepherd Boats

YOUR AREA DEALER

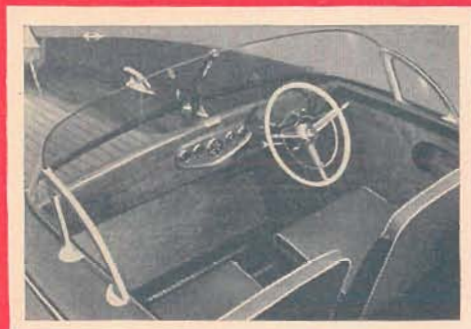


The Shepherd Custom "18" and "22"

Striking individual features comprise the Shepherd Custom "18" and the Shepherd Custom "22". These boats are available in two models: The V-drive runabout and the direct drive utility model. The engine in the direct drive unit is enclosed in a sound-proof hatch which is easily accessible. This soundproof hatch furnishes seating for several more passengers in an easy place for fishing.

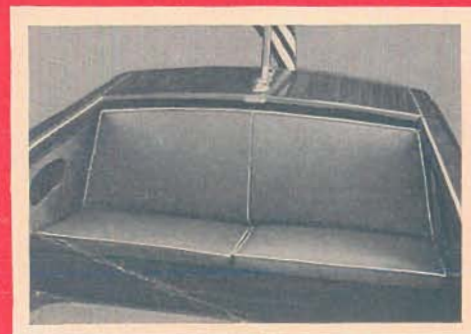
Located at the stern is the V-drive engine on both "18" and "22" custom runabout. The V-drive model is also soundproof and just—as a runabout owner—will prefer for winter.

All Shepherd Runabouts have generous freeboard assuring you of maximum comfort. The master craftsmen who constructed these boats left nothing undone to give obtainable. Shepherd offers you these several models and power options in a line-aboard. Other features such as the non-toxic-depleted removable top on the motor glass combine the "cruiser-look" and truly make Shepherd, America's Outstanding



3

Exclusively designed for Shepherd Runabout is the most correct safety glass windshield. Tinted glass, covered by a special process, to give wide view visibility. It is a triumph of small boat engineering for greater safety and comfort.



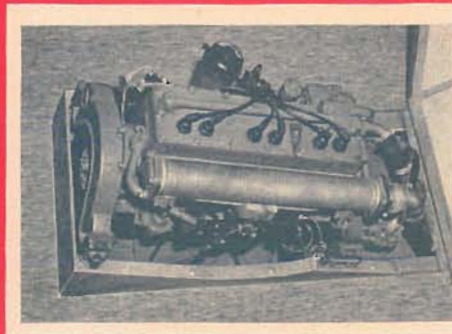
4

Comfortable vinyl seats in all models are designed for comfort and ease, free movement to any part of the runabout. Foam rubber cushions are durable and weatherproof. Large storage space beneath all seats.



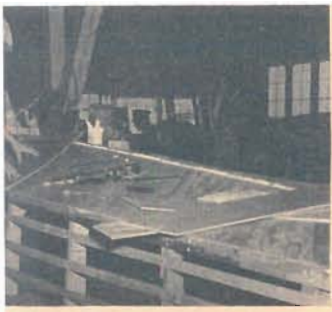
5

Optional for all models is a convertible top. Quickly and easily raised or lowered, it permits freedom of action in fair weather and protects comfort during sudden changes of weather. It is a practical and outstanding feature fitted for those designed for use.



1
Boat
model
18
and
22
are
both





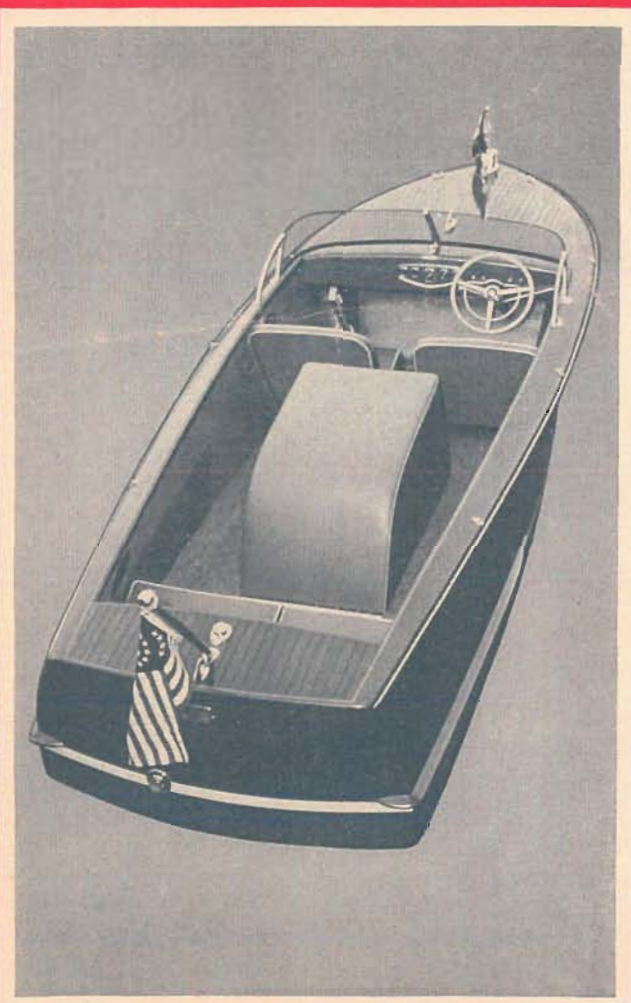
Custom construction is an important feature. The rugged styling and smooth interior hull craftsmen carefully lay the final planks. Custom craftsmanship is shown the face of each boat.

2

Mahogany planks cover each hull section, actually strengthening the hull and providing the highly polished finish that takes 45 hours or more of skilled workmanship to complete.

The engine housing is ready to install.

In all water conditions the finest boat distinguished equipment. Toller safety included.



6

The power plants in the Custom "12" and the Custom "22" may be obtained in either 50 or 60-hp. drive. Handling possible in these boats great handling. Boat engine any of the finest standard manufacturers.

Equipment

18' and 22' models

| | |
|---|----------------------|
| Steering Wheel ..Deluxe with horn ring clutch control lever | |
| Gas Control | On Steering Wheel |
| Floor Covering | Linoleum |
| Upholstery | Textileleather Tolex |
| Seat Cushions | Dunlopillo |
| Seat Backs | Resilatex |
| Hardware | Chrome plated |
| Lifting Rings | Fore and aft |
| Chocks, bow | 2 |
| Horn | 1 |
| Fender Hooks | 6 |
| Fire Extinguisher | 1 |
| Running Lights | Fore and aft |
| Hardware | Chrome plated |
| Instrument Panel | Deluxe—5 unit |
| Hull | Natural finish |
| Mooring Lines | 2 |
| Bow Pennant and Flagstaff | 1 |
| Ensign for Stern Flagstaff | 1 |
| Anchor and Line | 1 |
| Tool Kit | 1 |

Specifications

| | | |
|-------------------------------|-----------------------------------|--------------|
| Length | 18' | 22' |
| Beam | 6' 4" | 7' 1" |
| Draft | 2' | 2' 3" |
| Freeboard—fore and aft | 28½"—22" | 34½"—24" |
| Frames, Mahogany .. | 7/8" x 3½" | 7/8" x 3½" |
| Bottom, Mahogany .. | Double 3/8" | Double 3/8" |
| Stem, White Oak | 1 7/8" x 5½" | 1 7/8" x 5½" |
| Keel, White Oak | 1 7/8" x 5½" | 1 7/8" x 5½" |
| Decks & Topsides, Mahogany .. | 1/2" | 1/2" |
| Battens, Oak .. | 5/8" x 1 3/8" | |
| Fastenings .. | Brass screws and galvanized bolts | |
| Rudder ... | Manganese bronze | |
| Strut | Bronze with aqualite bearing | |
| Shaft—Monel .. | 1" | 1" |
| Shaft log—flexible .. | Bronze | Bronze |
| Gas tank capacity .. | 22 gals. | 32 gals. |
| Steering ... | Right hand drag link assembly | |

Specifications and equipment subject to change without notice.

GLENN E. FURNESS
SHEPHERD BOAT SALES
FOR NORTHERN NEW YORK
ALEXANDRIA BAY, N.Y.

SHEPHERD BOATS

POWER OPTIONS AND PRICES

18' Utility

| | | |
|------------------------|--------------------------|-----------|
| Gray Phantom Four..... | 75 hp Marine Engine, DD | \$3195.00 |
| Gray Phantom Six..... | 112 hp Marine Engine, DD | 3495.00 |
| Chrysler Crown..... | 115 hp Marine Engine, DD | 3595.00 |
| Gray Phantom Six..... | 125 hp Marine Engine, DD | 3650.00 |

18' V-Drive

| | | |
|---------------------|---------------------------|---------|
| Chrysler Crown..... | 125 hp Mar. Eng., 1.42 RG | 4395.00 |
|---------------------|---------------------------|---------|

22' Utility

| | | |
|----------------------------|--------------------------|-----------|
| Gray Phantom Six..... | 125 hp Marine Engine, DD | \$4295.00 |
| Chrysler Crown Special.. | 125 hp Marine Engine, DD | 4325.00 |
| Gray Model 150..... | 150 hp Marine Engine, DD | 4650.00 |
| Chrysler Royal Special.... | 165 hp Marine Engine, DD | 4695.00 |

22' V-Drive

| | | |
|--------------------------|---------------------------|---------|
| Chrysler Crown Special.. | 125 hp Mar. Eng., 1.42 RG | 4995.00 |
|--------------------------|---------------------------|---------|

27' V-Drive Express Cruiser

| | | |
|---------------------|-----------------------------|-------------|
| Chrysler Crown..... | 2-125 hp Mar. Eng., 1.42 RG | \$11,950.00 |
|---------------------|-----------------------------|-------------|

Standard equipment included in prices.
Specifications and equipment subject to change without notice.

All prices quoted are F.O.B. Buffalo, N. Y.
Other power options available on request.

Distributed in the United States exclusively by JAFCO MARINE BASIN, INC., BUFFALO, N. Y.

2-26-52